

Double Bass

# Danse Diabolique

Joseph Hellmesberger

$\text{♩} = 164$



**D**

86



95



103



110



118



127



136



146

**F**

155



164

104

*ff* *p* pizz.

172

Musical notation for the bass line of 'The Rose Tree'. The key signature is one flat (B-flat), and the time signature is 3/4. The melody consists of a series of eighth notes, each followed by a quarter rest, creating a rhythmic pattern of eighth and quarter notes.

181

[illegible]

190

190 *arco* **G** **6** *ff* **6** *ff* *div.* *ff*

208

214

214

3

222

[illegible]

230

230

pizz. arco

This musical staff shows measure 230 in bass clef with one flat. It contains seven eighth notes, each followed by a quarter rest. The notes are G2, F2, E2, D2, C2, B1, and A1. Above the staff, 'pizz.' is written above the fifth note (C2) and 'arco' is written above the sixth note (B1). The measure ends with a whole rest.

# Double Bass

# Double Bass

238



248



260



285



294



303



313



322



329



339

arco

3

$$ff$$

349

M

 $\underline{ff}$ 

357

**N**

363

369

### Tempo di Valse furioso

$$ff$$

376

383

$$ff$$

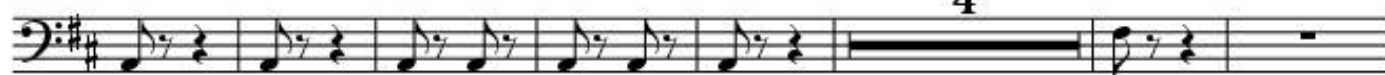
390

396

### Tempo primo

$$ff$$
 $\text{ff}$

4



## Più mosso

