

GEORGE FRIEDRICH
HANDEL
(1685-1759)

CONCERTO GROSSO
HWV 324

Op. 6, No. 6 in G minor

Critical Edition based on the Composer's Manuscript
Edited by Adolf Hoffmann and Hans Redlich

VIOLIN II

Violino II

(ripieno)

Concerto grosso g-moll / G minor

op. 6, Nr. 6

1. Largo affettuoso

Georg Friedrich Händel

un poco *p* *f* un poco *p*

8 *Viol. I conc.* *f*

15 *p* *f* *pp*

22 *Viol. I conc.* *f* *p* 1

30 *f* *p* *f* 1

37 *Viol. I conc.* *f* *pp* *f*

44 1 *p*

57 *p*

2. A tempo giusto

Viol. I, Ob. I

Violino II (ripieno) score for the second movement, "A tempo giusto". The score is written for Violino II (ripieno) and includes measures 6 through 43. The key signature is one flat (B-flat), and the time signature is common time (C). The tempo is marked "A tempo giusto". The score is divided into two systems: measures 6-39 and measures 43-43. The tempo changes to "Adagio" at measure 43.

Measures 6, 10, 15, 20, 25, 30, 35, 39, 43.

Adagio

3. Musette

Larghetto

Violino II (ripieno) score for the third movement, "Musette". The score is written for Violino II (ripieno) and includes measures 8 through 8. The key signature is one flat (B-flat), and the time signature is 2/4. The tempo is marked "Larghetto". The score is divided into two systems: measures 8-8 and measures 8-8. The tempo changes to "Viol. I conc." at measure 8.

Measures 8, 8.

Viol. I conc.

16 *Viol. I conc.*

27 *p*

36 *p*

42 *f*

50 *p*

57 *p*

63

68 *f*

75 *p* *f*

82

87

93

The image shows a page of a musical score for Violino II (ripieno). The score is written on ten staves, each beginning with a measure number. The key signature is one flat (B-flat). The time signature is 4/4. The first staff (measure 16) has a '2' above it and 'Viol. I conc.' written above the staff. The second staff (measure 27) has a 'p' dynamic marking. The third staff (measure 36) has a 'p' dynamic marking. The fourth staff (measure 42) has an 'f' dynamic marking. The fifth staff (measure 50) has a 'p' dynamic marking. The sixth staff (measure 57) has a 'p' dynamic marking. The seventh staff (measure 63) has no dynamic marking. The eighth staff (measure 68) has an 'f' dynamic marking. The ninth staff (measure 75) has 'p' and 'f' dynamic markings. The tenth staff (measure 82) has no dynamic marking. The eleventh staff (measure 87) has no dynamic marking. The twelfth staff (measure 93) has no dynamic marking.

97



100



105



110



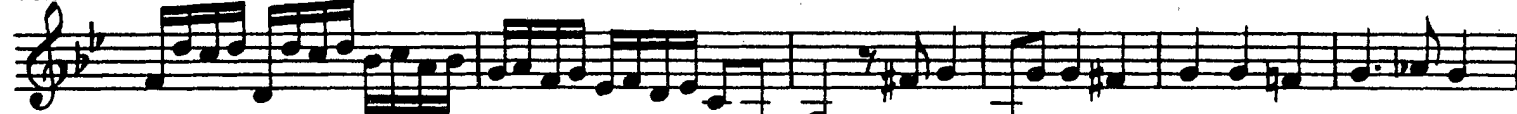
114



118



122



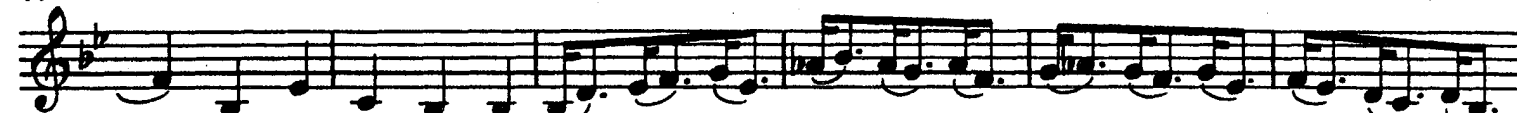
128



135



142



148



155



4. Allegro

4

8

1

13

18

22

26

30

34

38

43

p

f

Violino II (ripieno)

7



5. Allegro

8

6

11

16

21

26

37

36

41

47